

# EX Coated Broach



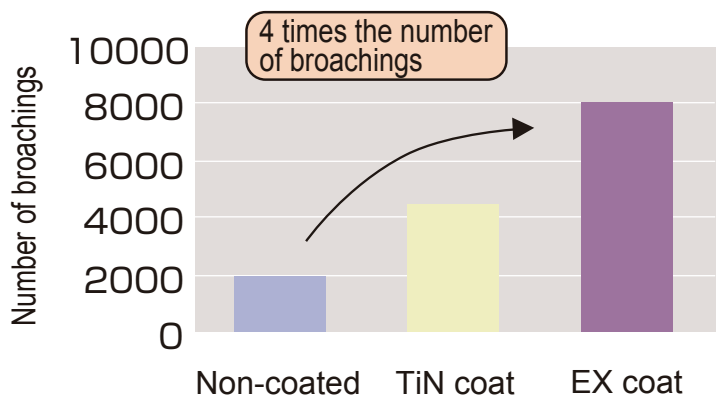
- EX coat for broaching ensures consistent accuracy and improved wear resistance
- Long tool life with both water soluble cutting fluid and water-immiscible cutting fluid

Making parts for transmissions, steering systems, etc.

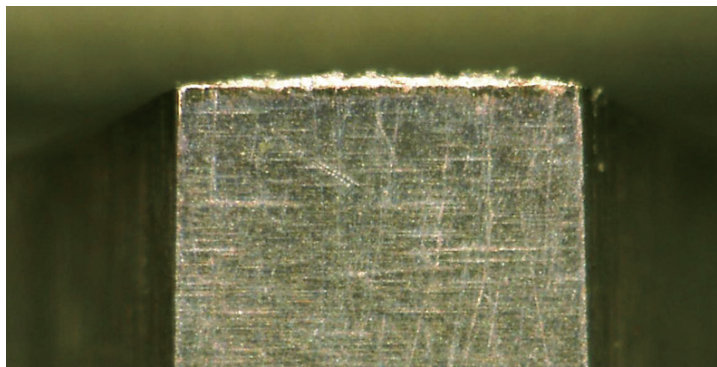


# Machining examples

## Water-immiscible cutting fluid



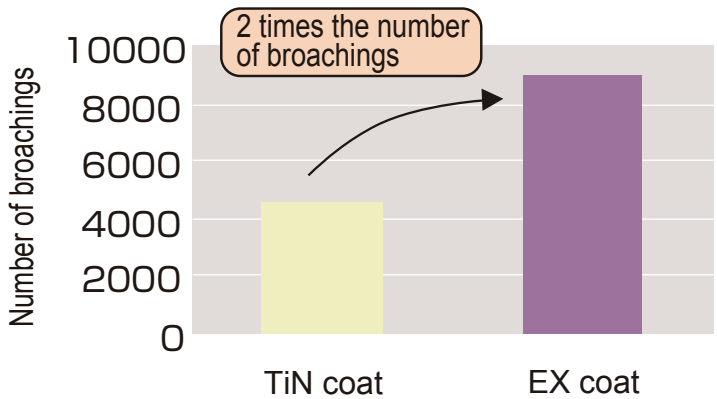
Wear on the clearance flank after 8,100 broachings (machining length 324m)



EX Coated Broach

Material	SCM20
Workpiece specifications	m1×PA30°×NT40 Major dia.: 43.5    Minor dia.: 40
Cutting length	40mm
Coolant	Water-immiscible cutting fluid

## Water soluble cutting fluid



Wear on the clearance flank after 9,000 broachings (machining length 180m)



EX Coated Broach

Material	SCr420
Workpiece specifications	m1×PA37.5°×NT25 Major dia.: 27    Minor dia.: 25
Cutting length	20mm
Coolant	Water soluble cutting fluid