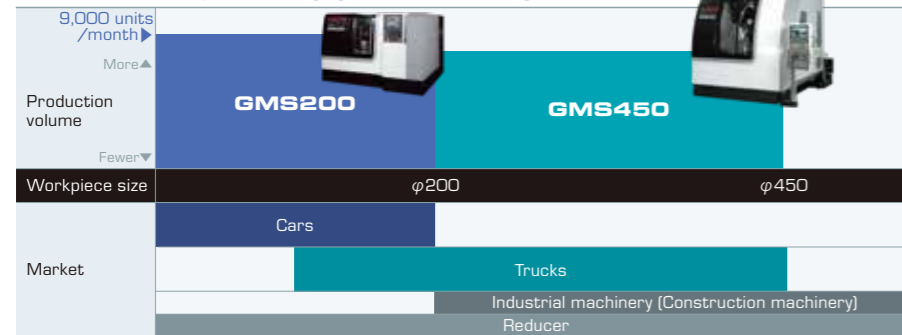


Main specification

Machining capacity	Max. workpiece diameter	φ220mm
	Max. machining module	m3.0
	Gear cutting tool	Skiving cutter
Cutter spindle	Spindle taper hole (tool shank type)	KM6350
	Max. RPM of spindle	4,000min ⁻¹
	Motor (30 min/continuous)	26/18.5kW
Workpiece spindle	Max. RPM of spindle	2,400min ⁻¹
	Motor (30 min/continuous)	26/30kW
Each unit traverse	Left-Right traverse (X-axis)	500mm
	Forward-Back traverse (Y-axis)	200mm
	Up-Down traverse (Z-axis)	300mm
	Tool swivel angle (B-axis)	±45deg

A.T.C.	Number of tool storage	6 piece
	Max. tool diameter	φ120mm
	Max. tool length	240mm
	Tool selection method	Tool storage position fixed/random
NC device	Type	FANUC 31i-B
	Display	FANUC 15" touch panel
Utilities	Overall power used	74kVA
	Machine height	1,680mm
Dimensions of machine	Required floor space (widthxdepth)	2,500x3,000mm
	Net machine weight	7,000kg

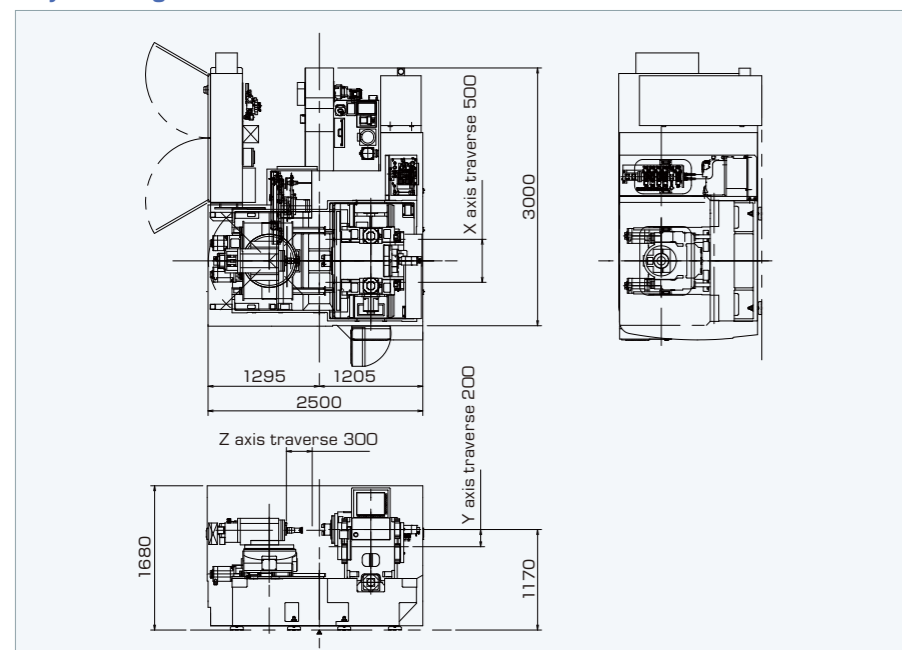
Product line-up for ring gear machining



Skiving cutter for hard-skiving



Layout diagram



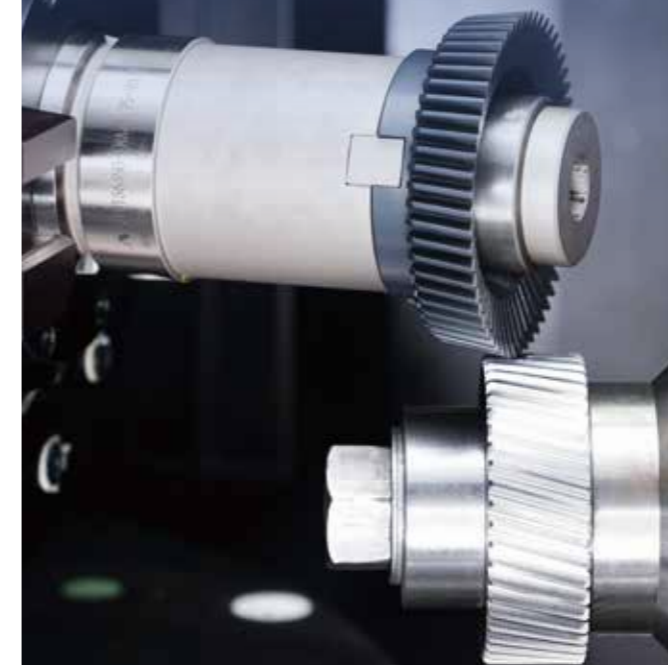
Combine with NACHI robots for auto loading system



INTEGRATED
MACHINING
CENTER
for GEARS

SKIVING MACHINING CENTER for GEARS

GMS200



NACHI

NACHI-FUJIKOSHI CORP.

<http://www.nachi.com>

Head Office Shiodome Sumitomo Bldg. 17F, 1-9-2 Higashi-Shinbashi, Minato-ku, Tokyo 105-0021 Tel: +81-(0)3-5568-5246
Toyama Plant 1-1-1 Fujikoshi-Honmachi, Toyama 930-8511 Tel: +81-(0)76-423-5111

NACHI AMERICA INC. HEAD QUARTERS 715 Pushville Road, Greenwood, Indiana, 46143, U.S.A. Tel: +1-317-530-1001 Fax: +1-317-530-1011 www.nachi-america.com
NACHI EUROPE GmbH Bischofstrasse 99, 47809, Krefeld, GERMANY Tel: +49-(0)2151-65046-0 Fax: +49-(0)2151-65046-90 www.nachi.de
NACHI TECHNOLOGY (THAILAND) CO., LTD. Unit 23/109(A), Fl.24th Sorachai Bldg., Sukhumvit 63 Road(Ekamail), Klongtonnue, Wattana, Bangkok 10110, THAILAND Tel: +66-2-714-0008 Fax: +66-2-714-0740 www.nachi.co.th
www.nachinip.com.sg
NACHI SINGAPORE PTE. LTD. No.2 Joo Koon Way, Jurong Town, Singapore 628943, SINGAPORE Tel: +65-65587393 Fax: +65-65587371
NACHI (SHANGHAI) CO., LTD. 5F, Building A, National Center for Exhibition and Convention, 1988 Zhuguang Road, Qingpu District, Shanghai, 201702, CHINA Tel: +86-(0)21-6915-2200 Fax: +86-(0)21-6915-5427 www.nachi-china.com.cn

●All information in this catalog is based on in-house measurements. This information is not guaranteed for all conditions.
●Improvements to ratings or outer appearance may result in unannounced changes.

CATALOG NO. **M6203E**
2018.04.Z-MIZUNO

This machine is considered a strategic resource (or service) according to restrictions in the foreign exchange and trade laws. Based on these laws, export from Japan requires an export permit from Japanese government.

GMS200

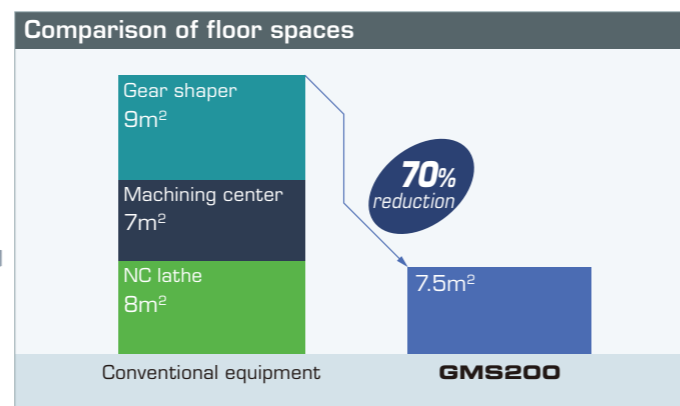
General purpose • Compact Multi-function machine to include skiving function

- Best for gear machining for automotive parts
- Compact equipment with flexibility to cope with the various kinds of small quantity production and multiple processes
- Hard-skiving achieves high-precision machining of hardened gears
- Interactive operation screen provides excellent man-machine interface

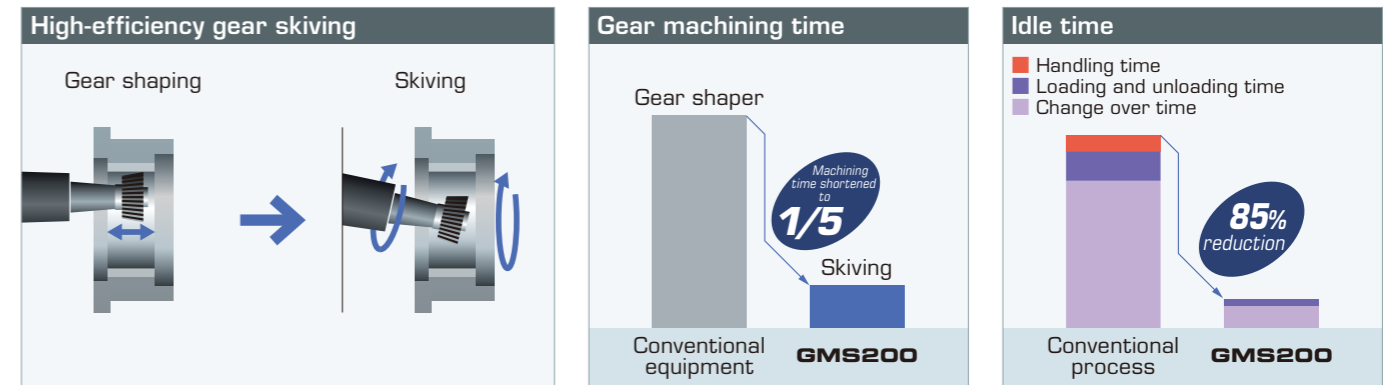
Multiple process in one machine



To achieve compact production lines by reducing floor space with 3 roles in 1 machine



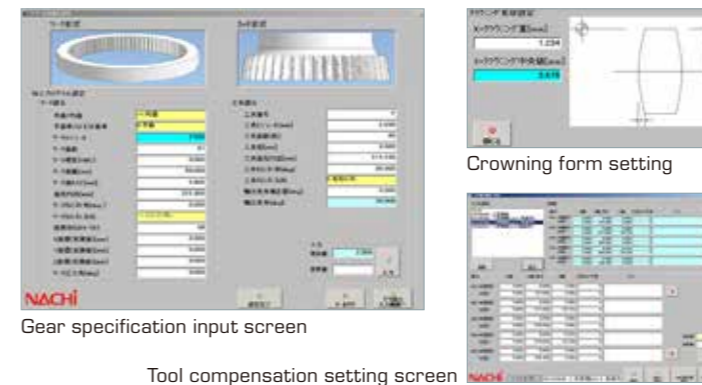
High-efficiency gear skiving and integrated process remarkably reduce machining time



Superior workability and operability

Interactive operation screen for skiving (optional)

- Crowning process and run-in amount modification function (initial mode)
- Newly added tool compensation setting and workpiece coordinate system preset
All machining conditions for skiving can be set

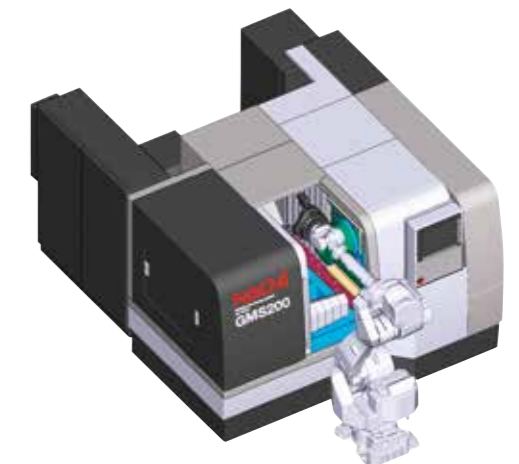


Reduced machine height for better view

- Contribute to environment improvement in factory



The design for auto loading system with robots



Ceiling opening door

- Aperture dimension : 600mm
- Easy access to jig and simple loading & unloading of workpieces
- Workpiece installation height : 1,170mm

Machining application

