

# NACHI

Spherical Roller Bearings  
**EXQ** SERIES

## Spherical Roller Bearings for Flour Mills

### Roller Mill and Plansifter Bearings



#### Features & Benefits

- World class quality
- EXQ Series offers the highest load capacity and speed limits
- Heat stabilized to 200° C as a standard

[NachiAmerica.com](http://NachiAmerica.com)

**NACHI AMERICA, INC.**  
Corporate Headquarters  
715 Pushville Road  
Greenwood, Indiana 46143  
Phone: **317-530-1001**  
Fax: 317-530-1011

**NACHI AMERICA, INC. - L.A. OFFICE**  
12652 Alondra Boulevard  
Cerritos, California 90703  
Phone: **562-802-0055**  
Fax: 562-802-2455

# Spherical Roller Bearings

## EXQ SERIES

### High axial resistance load performance

Internal specifications have been optimized to greatly improve axial resistance load performance.

### Low temperature rise and higher permissible rotation

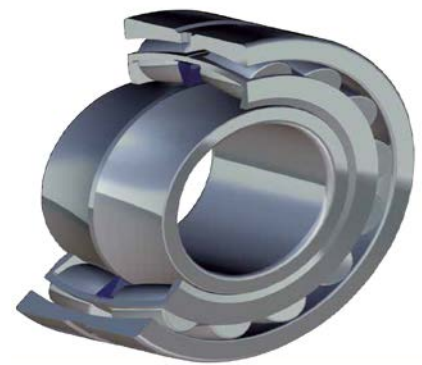
Heat generation of the bearing has been reduced by stabilizing the roller movement during rotation, realizing the world's highest permissible rotation.

### Long life

Long life has been realized by optimized internal specifications and using high cleanliness steel.

### Service temperature of 200 °C

Standardized heat stabilization treatment and service temperature up to 200 °C.



Bearing Number	Dynamic Load Capacity (N)	Static Load Capacity (N)	Limiting Speed - Grease (RPM)	Limiting Speed - Oil (RPM)
21310EXW33KC3	178,000	151,000	4,500	5,600
21315EXW33KC3	340,000	298,000	3,200	4,000
22211EXQW33KC3	171,000	144,000	5,800	7,000
22215EXQW33KC3	265,000	234,000	4,400	5,300
22216EXQW33KC3	299,000	269,000	4,000	4,700
22217EXQW33KC3	355,000	320,000	3,700	4,500
22218EXQW33KC3	410,000	375,000	3,500	4,200
22220EXQW33KC3	520,000	480,000	3,100	3,800
22230EW33KC3	1,200,000	1,200,000	1,800	2,400
22313EXQW33KC3	415,000	355,000	3,500	4,200
22314EXQW33KC3	480,000	415,000	3,300	4,000
22315EXQW33KC3	550,000	475,000	3,100	3,800
22316EXQW33KC3	595,000	520,000	2,900	3,600
22318EXQW33KC3	745,000	660,000	2,600	3,200
22320EXQW33KC3	975,000	875,000	2,200	2,900
22330EW33KC3	1,770,000	1,740,000	1,500	2,100
23218EXQW33KC3	470,000	482,000	3,400	4,400